

RSSSP

Religious/Spiritual Struggle Screening Protocol

Purpose : Brief screening protocol for use in identifying patients who may be experiencing religious/spiritual struggle, as well as patients who would like a visit from a chaplain

Admin time : 3 min - variable

User Friendly : High

Administered by : Healthcare provider or Chaplain

Content : questions pertaining to importance of religion in individual's life and illness, and desire for a visit by a chaplain

Author : Fitchett and Risk, 2009

Copyright : Free to use for non-commercial clinical purposes, with author reference

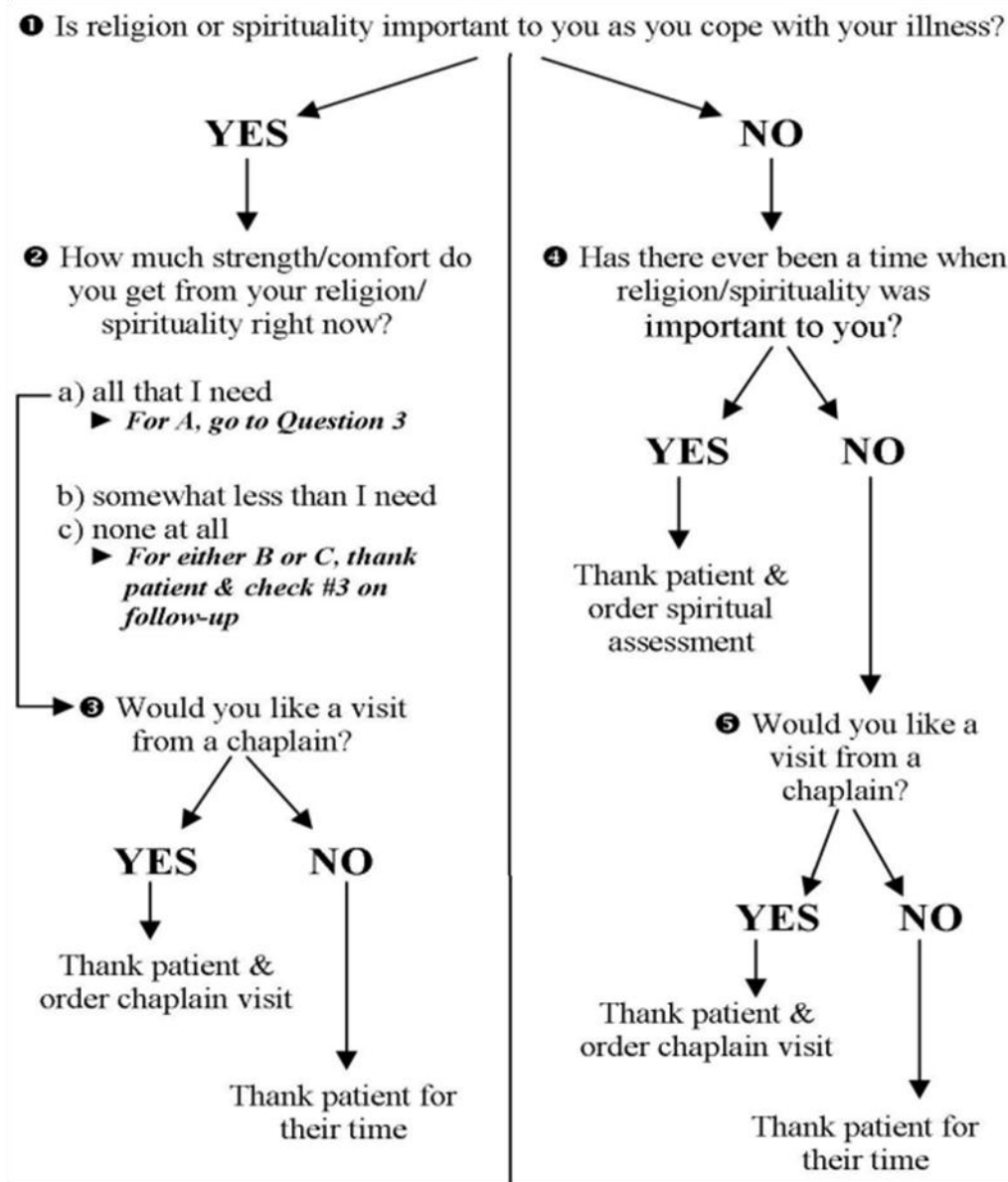


<https://www.cgakit.com/rssp>

RSSSP

Religious/Spiritual Struggle Screening Protocol

Name _____ Date _____ Assessed by _____



Notes :